

RTL-20V

Description:

The RTL-20V is a vertical spacer used in Hendrix Single Phase Spacer Cable Systems. After they are hung on the messenger, the RTL-20V will support and separate the phase conductors in a verticle configuration. The RTL-20V uses ratcheting clamps to secure the messenger and conductor. The RTL-20V is molded, using proprietary, gray, track resistant, high density polyethylene.

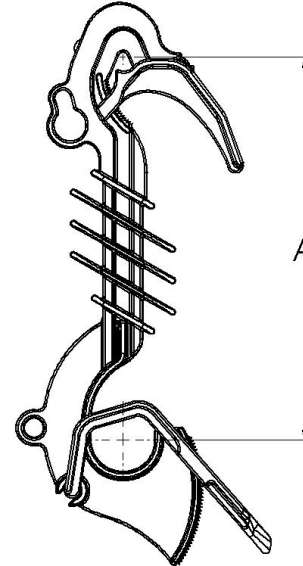
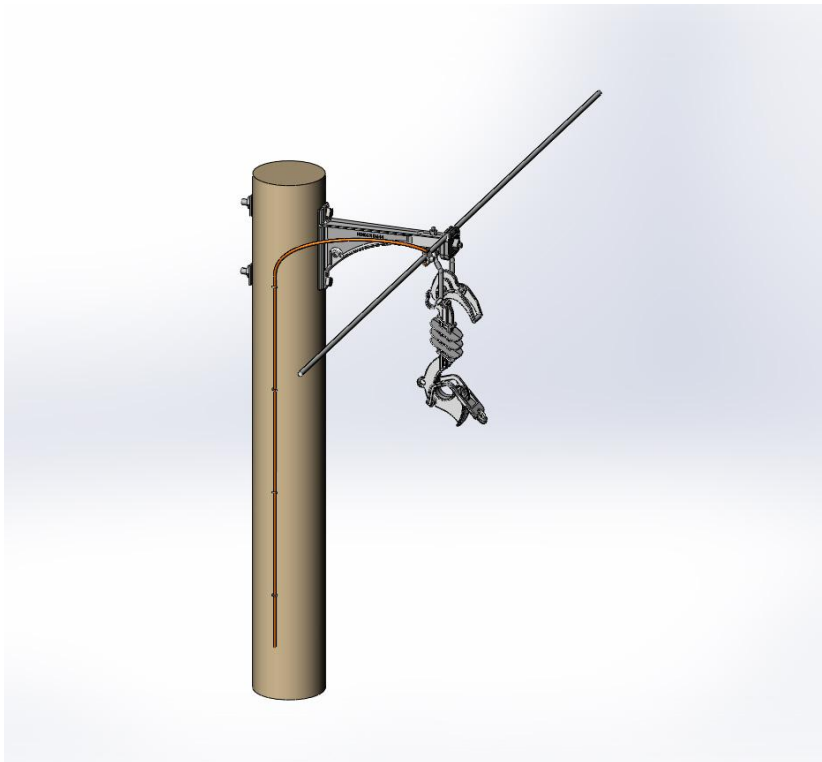
Benefits:

- Optimum dielectric compatibility with Hendrix Spacer Cable
- Excellent weather washing characteristics
- Long leakage distance resists flashovers
- Highly resistant to shock/impact/rifle fire
- Lightweight, rugged construction
- Integral ratcheting clamps on the RTL-20V secure the messenger and phase conductor



Application:

The RTL-20V is designed for use on single phase distribution circuits rated 20kV, phase to ground, and this spacer has a hole for attachmnet of a BAS Anti-Sway Bracket, if required. A typical application for the RTL-20V is backlot, residential construction. Installation of the spacers should be made in accordance with Hendrix Installation Instructions. Spacers are installed at 30 foot intervals.



Catalog No.	Overall Dimensions (in)		Dimensions (in)			Min. Leakage Distance (in)	Max. Messenger Diameter (in)	Max. Conductor Diameter (in)	Weight (lbs)	Material
	Height	Width	A	B	C					
RTL-20V	17 11/16	3 1/4	12			20 1/2	0.75	2.00	1.35	High Density Polyethylene