

# RC-24, RC-24W Rack Arm Covers

## Description:

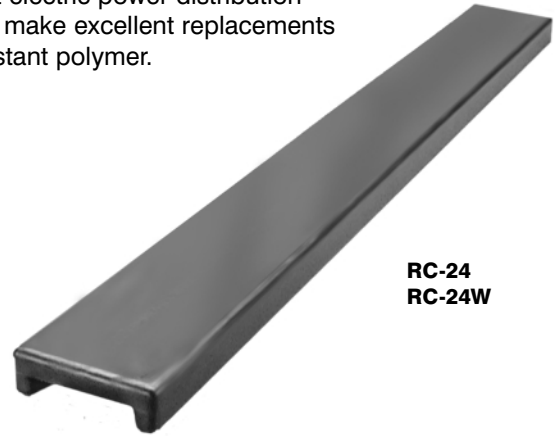
The RC-24 and RC-24W are covers for metal rack arms which support electric power distribution cables in manholes and underground tunnels. These rack arm covers make excellent replacements for traditional porcelain covers. They are made of black, abrasion-resistant polymer.

## Benefits:

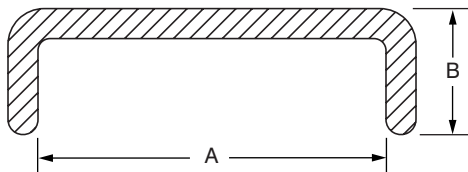
- Edges have rounded corners
- Cables rest directly on the covers
- Non-abrasive, unbreakable, insulating
- Resistant to chemicals, solvents, lubricants
- Will not deteriorate

## Application:

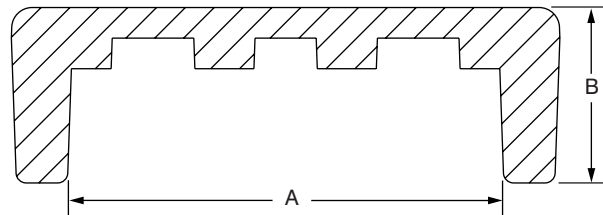
The RC-24 and RC-24W are designed to fit rack arms having widths as indicated in the specification table below. Required lengths can be cut at the job site from standard 24.0" pieces.



RC-24  
RC-24W



RC-24



RC-24W

Catalog Number	Dimension (in)		Weight (lbs)	Material
	A	B		
RC-24	1 13/16	2 1/32	0.41	Black Polyethylene
RC-24W	2 5/8	1 1/16	1.14	Black Polyethylene