

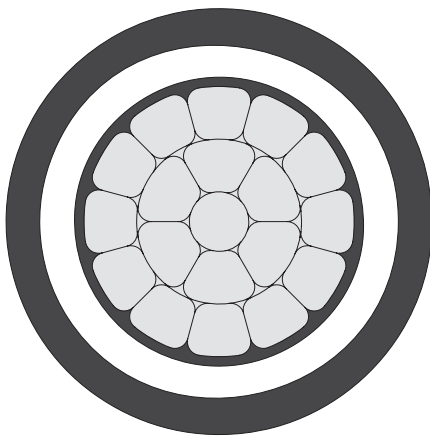
Spacer Cable Systems - Description

Distribution Systems from 5kV to 46kV

Spacer cable is a messenger supported primary distribution system using covered conductors in a close triangular configuration. The system has the mechanical strength to weather severe storms and the electrical strength to prevent faults due to phase to ground or phase to phase contact, tree contact or animal contact. Hendrix provides complete, coordinated systems including conductors, spacers, messenger, insulators, support brackets and installation equipment. Hendrix also provides design assistance during the planning stage and installation assistance on the job site.



Conductors:



- Covering thickness is specific for each voltage from 5kV to 46kV
- Compact stranded 1350-H19 All Aluminum Conductors
- Black, semiconducting conductor shield for 25kV and above (Recommended at 15kV when tree contact is expected)
- Inner layer of natural low density polyethylene for high dielectric strength and strippability
- Outer layer of proprietary, black or gray, high density polyethylene for resistance to tracking, abrasion and ultraviolet degradation
- Dielectrically compatible with Hendrix insulators and spacers

Spacers:



Three Phase

Single Phase

- Supports conductors and maintains phase spacing
- Spacer ratings available from 5kV to 46kV
- Proprietary, gray, track resistant, high density polyethylene
- Provides high strength and flexibility under dynamic loading
- Ultraviolet resistance has been proven for over 30 years
- Track resistant compound does not support current flow on surface
- Long leakage distance. Self washing shed design allows operation even with contamination
- Spacers are installed at 30 foot intervals

continued

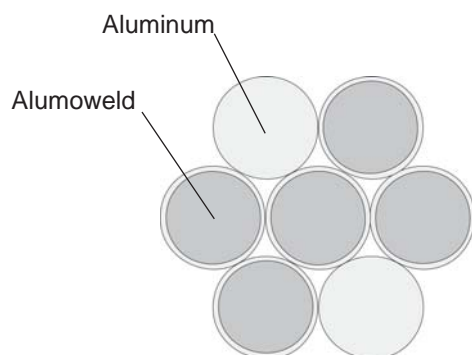
Spacer Cable Systems - Description

Insulators:



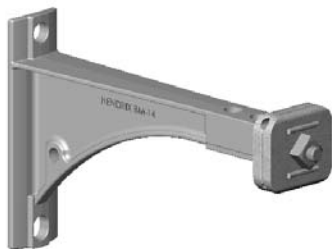
- Used with Hendrix angle brackets to support conductors at angles
- Proprietary, gray, track resistant, high density polyethylene
- Compatible with Hendrix covered conductors
- Highly resistant to impact damage, breakage and vandalism
- Used with standard insulator pins
- Spacer cable conductors are secured using Hendrix covered tie wire

Messenger :



- Supports the spacers and conductors
- Alumoweld-Aluminum stranding
- High strength design will support ice and wind loads or fallen tree limbs
- May be used as system neutral. Messengers up to 4/0 AWG equivalent conductivity are available
- Shields system from lightning strikes
- Special messengers are available for long spans such as river or highway crossings

Pole Hardware:



- Tangent, angle, dead end, tap and pole top extension brackets are available for systems to 46kV
- Made of either corrosion resistant galvanized steel or aluminum alloy
- High strength design will support ice and wind loads and fallen tree branches
- Maintains the compact triangular spacing of the phase conductors
- Compatible with Hendrix Roll-By installation equipment