

Polyethylene Pin Type Insulators – Data

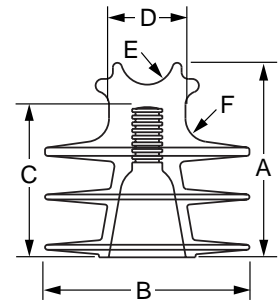
B-1 Torque Bolt, HT-1 Hook Tool

OVERHEAD PRODUCTS

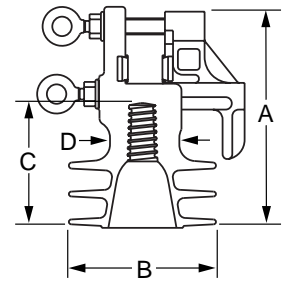


Electrical, Mechanical & Physical Data:

Characteristic	HPI-15F	HPI-15 HPI-15VT	HPI-25 HPI-25VT	HPI-25-02 HPI-25VT-02	HPI-35** HPI-35VT**	HPI-35-02** HPI-35VT-02**
Typical Application, kV	15	15	25	25	35	35
ANSI Class	55-4	55-3	55-5	55-5	55-6	55-6
Leakage Distance, inches	11¾	12	13¾	13¾	21	21
Dry Arcing Distance, inches	6	6¼	7½	7½	9½	9½
Pin Hole Diameter, inches*	1	1	1	1¾	1	1¾
Minimum Pin Length, inches	6	6	6	6	6	6
60Hz. Dry Flashover, kV	69	77	94	94	110	110
60Hz. Wet Flashover, kV	44	46	52	52	63	63
Positive Impulse Flashover, kV	128	130	150	150	184	184
Negative Impulse Flashover, kV	175	176	182	182	250	250
Low Frequency Puncture, kV	215	195	220	190	220	190
RIV @1mhz.						
10kV to grd, mV	0	0	0	0	0	0
15kV to grd, mV	-	-	0	0	0	0
22kV to grd, mV	-	-	-	-	850	850
Cantilever Strength, lbs.	3,000	3,000	3,000	3,000	3,000	3,000
Dimensions, inches						
Plain Top / Vise-Top	A	5¼ / 8¼	5½ / 8½	5½ / 8½	7⅛ / 10¾	7⅛ / 10¾
	B	5½ / 5½	7½ / 7½	7½ / 7½	7½ / 7½	7½ / 7½
	C	3⅞	3⅞ / 3⅞	4 / 4	4 / 4	5½ / 5½
	D	2⅞	2¼ / 2¼	2⅞ / 3	2⅞ / 3	2⅞ / 3
	E	1	¾ / N/A	1 / N/A	1 / N/A	1 / N/A
	F	¾	¾ / N/A	⅞ / N/A	⅞ / N/A	⅞ / N/A
Max. Conductor, Vise-Top, inches	N/A	1.75	1.75	1.75	1.75	1.75
Weight, lbs.	1.5	1.3	2.0	2.0	2.6	2.6
Neck Style	F	C	F	F	F	F
Maximum continuous conductor operating temp., °C	120	120	120	120	120	120



Tie-Top Insulator



Vise-Top Insulator

When ordering Vise-Top insulators, specify the suffix "P" for covered conductors and bare copper conductors or "M" for bare aluminum conductors.

* Different pin hole diameters and thread configurations to meet international standards are available upon request.

**Review design performance data before using on bare wire systems.

B-1 Torque Bolt:

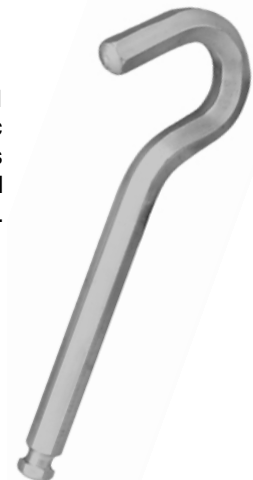
The B-1 torque bolt may be purchased separately for replacement purposes. It is made of black nylon and is designed to be tightened using the break-away ring. This ensures proper gripping force on the conductor. The B-1 torque bolt fits all Vise-Top insulators. A new torque bolt should be used when a conductor is removed and re-installed in an insulator.



Catalog No.: B-1
Weight: 5.0 lbs/50 pieces
Length: 6 ½"
Material: Black Nylon

HT-1 Hook Tool:

The HT-1 Hook Tool is for quick tightening of the Torque Bolts on Vise-Top Insulators on de-energized circuits. It snaps into most hydraulic impact wrenches and other tools used in aerial bucket trucks. The tool should be operated at slow speed.



Catalog No.: HT-1
Size: 7/16 " Hex
Length: 6 ¾"
Material: Aluminum